



The Standard Duty Pump

SolidC Centrifugal Pump

Applications

The SolidC pump is designed for standard duty applications, like pumping CIP (Cleaning In Place) solutions, utilities, water (processing, heating, cooling), washing machines and simple transport duty within working range. SolidC is suited for use in the food, dairy, beverage, personal care, light chemical and water industries.

Standard design

The SolidC pump consists of a standard motor, stub shaft, mechanical compression coupling, adaptor, backplate, impeller, pump casing and shaft seal.

The SolidC pump is designed for CIP with emphasis on large internal radii and cleanable seals.

The complete SolidC unit is supported on four adjustable legs.

Shaft seals

The SolidC pump is equipped with either an external single or a flushed shaft seal. Both have stationary seal rings in acid-resistant steel AISI 329 with sealing surface in silicon carbide and rotating seal rings in carbon. The optional flush seal has a long lasting lip seal.

Materials

Product wetted steel parts:	Stainless steel AISI 316L.
Other steel parts:	Stainless steel AISI 304.
Finish:	3A polishing (Ra 32μ - inches).
Product wetted seals:	EPDM (acc. to FDA).

Technical data

Max. inlet pressure:	58 psi (4 bar).
Temperature range	14°F to 250°F (EPDM).

Flushed shaft seal (FSS):

Water pressure inlet:	max. 14.5 psi.
Water consumption:	0.07 -0.13 gpm.

Connections for FSS:

R 1/8" (BSP) external thread.



SolidC pump.

Motor

Standard C-faced, foot mounted motor according to NEMA standard. 3500 RPM or 1750 RPM. Epact efficiency, Class F. Note frame size per horsepower.

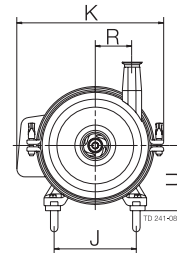
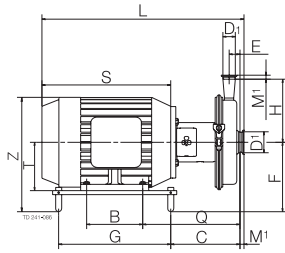
Voltage and frequency

(3 phase, 60 Hz 230/460V Standard)
Other voltages and frequencies available upon request.

Motor sizes

60 Hz: 1, 1½, 2, 3, 5, 7.5, 10, 15, 20, 25, 30 Hp.

Dimensions (inch) 900239/0



SolidC-1 1800rpm

Size	Weg-motor	
	1 Hp (143TC)	1.5 Hp (143TC)
B	4.00	4.00
C	5.12	5.12
E	1.10	1.10
F	6.75	6.75
G	9.38	9.38
H	7.09	7.09
J	5.75	5.75
Q	9.12	9.12
R	2.64	2.64
S	9.97	9.97
T	3.50	3.50
U	4.00	4.00
Z	10.25	10.25
K	12.10	12.10
DI	2"	2"
DII	1½"	1½"
MI	0.50	0.50
MII	0.50	0.50
L	16.87	16.87
Weight (lbs)	64.00	64.00

SolidC-1 3600rpm

Size	Weg-motor					
	1.5 Hp (143TC)	2 Hp (145TC)	3 Hp (182TC)	5 Hp (184TC)	7.5 Hp (213TC)	10 Hp (215TC)
B	4.00	5.00	4.50	5.50	5.50	7.00
C	5.12	5.12	6.06	6.06	8.47	8.47
E	1.10	1.10	1.10	1.10	1.10	1.10
F	6.75	6.75	7.75	7.75	8.50	8.50
G	9.38	9.38	12.50	12.50	14.00	14.00
H	7.09	7.09	7.09	7.09	7.09	7.09
J	5.75	5.75	7.75	7.75	8.75	8.75
Q	9.12	9.12	9.56	9.56	11.97	11.97
R	2.64	2.64	2.64	2.64	2.64	2.64
S	9.97	10.95	11.99	12.99	14.65	16.14
T	3.50	3.50	4.50	4.50	5.25	5.25
U	4.00	4.00	5.00	5.00	5.75	5.75
Z	10.25	10.25	12.59	12.59	14.09	14.09
K	12.10	12.10	13.48	13.48	14.58	14.58
DI	2"	2"	2"	2"	2"	2"
DII	1½"	1½"	1½"	1½"	1½"	1½"
MI	0.5	0.5	0.5	0.5	0.5	0.5
MII	0.5	0.5	0.5	0.5	0.5	0.5
L	16.87	17.85	18.92	19.92	23.12	24.61
Weight (lbs)	64.00	66.00	106.00	113.00	149.00	163.00

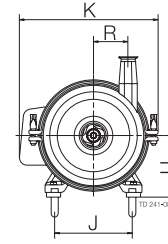
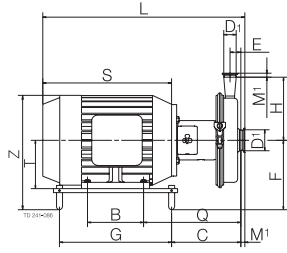
SolidC-2 1800 rpm

Size	Weg-motor			
	1 Hp (143TC)	1.5 Hp (143TC)	2 Hp (145TC)	3 Hp (182TC)
B	4.00	4.00	5.00	4.50
C	5.38	5.38	5.38	6.31
E	1.38	1.38	1.38	1.38
F	6.75	6.75	6.75	7.75
G	9.38	9.38	9.38	12.50
H	7.87	7.87	7.87	7.87
J	5.75	5.75	5.75	7.75
Q	9.38	9.38	9.38	9.81
R	3.70	3.70	3.70	3.70
S	9.97	9.97	10.95	11.99
T	3.50	3.50	3.50	4.50
U	4.00	4.00	4.00	5.00
Z	10.25	10.25	10.25	12.59
K	13.98	13.98	13.98	14.46
DI	2½"	2½"	2½"	2½"
DII	1½"	1½"	1½"	1½"
MI	0.50	0.50	0.50	0.50
MII	0.50	0.50	0.50	0.50
L	17.13	17.13	18.11	19.17
Weight (lbs)	70.00	70.00	73.00	110.00

SolidC-2 3600 rpm

Size	Weg-motor					
	3 Hp (182TC)	5 Hp (184TC)	7.5 Hp (213TC)	10 Hp (215TC)	15 Hp (254TC)	20 Hp (256TC)
B	4.50	5.50	5.50	7.00	8.25	10.00
C	6.31	6.48	8.77	8.77	10.77	10.77
E	1.38	1.38	1.38	1.38	1.38	1.38
F	7.75	7.75	8.50	8.50	10.00	10.00
G	12.50	12.50	14.00	14.00	14.50	14.50
H	7.87	7.87	7.87	7.87	7.87	7.87
J	7.75	7.75	8.75	8.75	10.25	10.25
Q	9.81	9.98	12.27	12.27	13.02	13.02
R	3.70	3.70	3.70	3.70	3.70	3.70
S	11.99	12.99	14.65	16.14	19.21	20.95
T	4.50	4.50	5.25	5.25	6.25	6.25
U	5.00	5.00	5.75	5.75	6.88	6.88
Z	12.59	12.59	14.09	14.09	16.18	16.18
K	14.46	14.46	15.58	15.58	17.07	17.07
DI	2½"	2½"	2½"	2½"	2½"	2½"
DII	1½"	1½"	1½"	1½"	1½"	1½"
MI	0.50	0.50	0.50	0.50	0.50	0.50
MII	0.50	0.50	0.50	0.50	0.50	0.50
L	19.17	20.34	23.42	24.92	27.98	29.72
Weight (lbs)	110.00	118.00	154.00	168.00	263.00	285.00

Dimensions (inch) 900239/0



SolidC-3 1800 rpm

Size	Weg-motor				
	1 Hp (143TC)	1.5 Hp (143TC)	2 Hp (145TC)	3 Hp (182TC)	5 Hp (184TC)
B	4.00	4.00	5.00	4.50	5.50
C	5.38	5.38	5.38	6.31	6.31
E	1.22	1.22	1.22	1.22	1.22
F	6.75	6.75	6.75	7.75	7.75
G	9.38	9.38	9.38	12.50	12.50
H	8.27	8.27	8.27	8.27	8.27
J	5.75	5.75	5.75	7.75	7.75
Q	9.38	9.38	9.38	9.81	9.81
R	4.76	4.76	4.76	4.76	4.76
S	9.97	9.97	10.95	11.99	12.99
T	3.50	3.50	3.50	4.50	4.50
U	4.00	4.00	4.00	5.00	5.00
Z	10.25	10.25	10.25	12.59	12.59
K	15.35	15.35	15.35	15.35	15.35
DI	3"	3"	3"	3"	3"
DII	1½"	1½"	1½"	1½"	1½"
MI	0.50	0.50	0.50	0.50	0.50
MII	0.50	0.50	0.50	0.50	0.50
L	17.13	17.13	18.11	19.17	20.17
Weight (lbs)	80.00	80.00	83.00	120.00	128.00

SolidC-3 3600 rpm

Size	Weg-motor						
	5 Hp (184TC)	7.5 Hp (213TC)	10 Hp (215TC)	15 Hp (254TC)	20 Hp (256TC)	25 Hp (284TSC)	30 Hp (286TSC)
B	5.50	5.50	7.00	8.25	10.00	9.50	11.00
C	6.31	8.85	8.85	10.84	10.84	11.46	11.46
E	1.22	1.22	1.22	1.22	1.22	1.22	1.22
F	7.75	8.50	8.50	10.00	10.00	10.75	10.75
G	12.50	14.00	14.00	14.50	14.50	15.50	15.50
H	8.27	8.27	8.27	8.27	8.27	8.27	8.27
J	7.75	8.75	8.75	10.25	10.25	11.25	11.25
Q	9.81	12.35	12.35	13.09	13.09	13.71	13.71
R	4.76	4.76	4.76	4.76	4.76	4.76	4.76
S	12.99	14.65	16.14	19.21	20.95	21.81	23.31
T	4.50	5.25	5.25	6.25	6.25	7.00	7.00
U	5.00	5.75	5.75	6.88	6.88	7.63	7.63
Z	12.59	14.09	14.09	16.18	16.18	17.82	17.82
K	15.35	16.26	16.26	17.76	17.76	18.55	18.55
DI	3"	3"	3"	3"	3"	3"	3"
DII	1½"	1½"	1½"	1½"	1½"	1½"	1½"
MI	0.50	0.50	0.50	0.50	0.50	0.50	0.50
MII	0.50	0.50	0.50	0.50	29.79	0.50	0.50
L	20.17	23.50	24.99	28.05	29.79	30.77	32.27
Weight (lbs)	128.00	162.00	172.00	273.00	295.00	347.00	403.00

SolidC-4 1800 rpm

Size	Weg-motor					
	1.5 Hp (143TC)	2 Hp (145TC)	3 Hp (182TC)	5 Hp (184TC)	7.5 Hp (213TC)	10 Hp (215TC)
B	4.00	5.00	4.50	5.50	5.50	7.00
C	5.25	5.25	6.18	6.18	8.63	8.63
E	1.06	1.06	1.06	1.06	1.06	1.06
F	6.75	6.75	7.75	7.75	8.50	8.50
G	9.38	9.38	12.50	12.50	14.00	14.00
H	9.06	9.06	9.06	9.06	9.06	9.06
J	5.75	5.75	7.75	7.75	8.75	8.75
Q	9.25	9.25	9.68	9.68	12.13	12.13
R	4.76	4.76	4.76	4.76	4.76	4.76
S	9.97	10.95	11.99	12.99	14.65	16.14
T	3.50	3.50	4.50	4.50	5.25	5.25
U	4.00	4.00	5.00	5.00	5.75	5.75
Z	10.25	10.25	12.59	12.59	14.09	14.09
K	16.14	16.14	16.14	16.14	16.65	16.65
DI	3"	3"	3"	3"	3"	3"
DII	2"	2"	2"	2"	2"	2"
MI	0.50	0.50	0.50	0.50	0.50	0.50
MII	1.13	1.13	1.13	1.13	1.13	1.13
L	17.00	17.98	19.04	20.04	23.28	24.77
Weight (lbs)	84.00	87.00	124.00	132.00	168.00	183.00

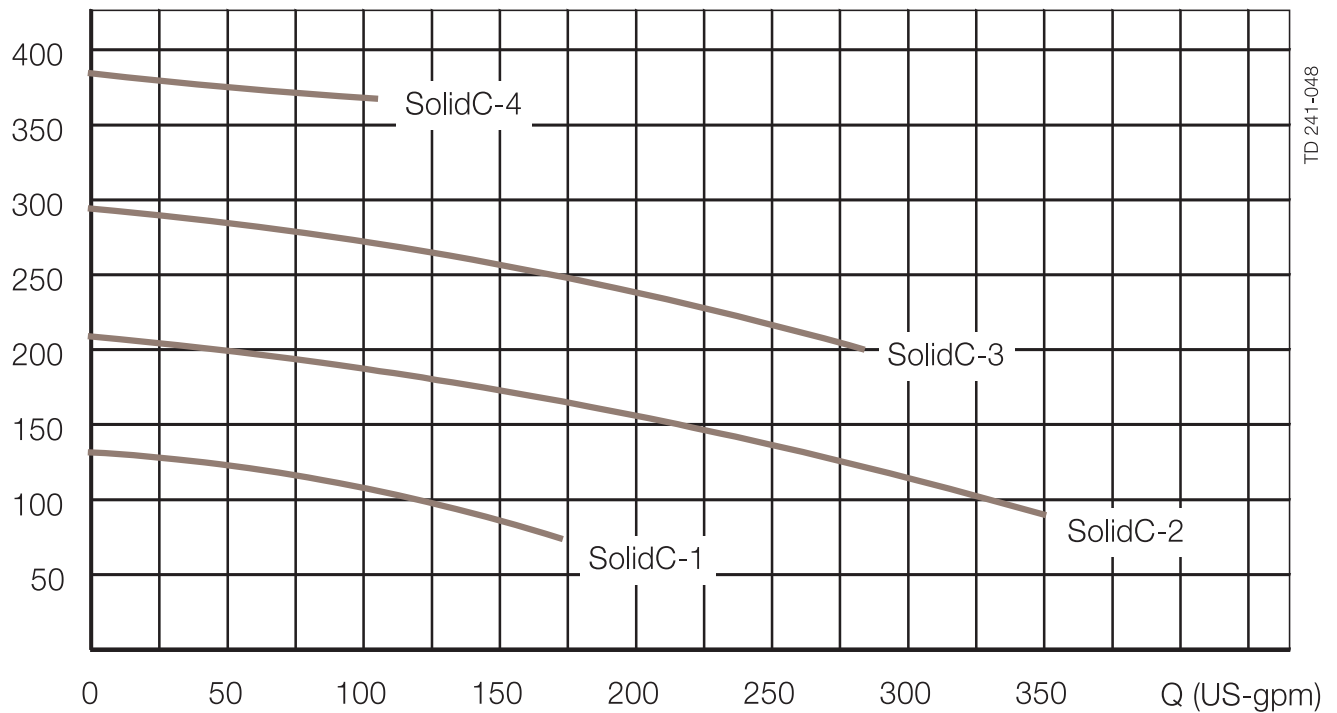
SolidC-4 3600 rpm

Size	Weg-motor				
	10 Hp (215TC)	15 Hp (254TC)	20 Hp (256TC)	25 Hp (284TSC)	30 Hp (286TSC)
B	7.00	8.25	10.00	9.50	11.00
C	8.63	10.64	10.64	11.26	11.26
E	1.06	1.06	1.06	1.06	1.06
F	8.50	10.00	10.00	10.75	10.75
G	14.00	14.50	14.50	15.50	15.50
H	9.06	9.06	9.06	9.06	9.06
J	8.75	10.25	10.25	11.25	11.25
Q	12.13	12.89	12.89	13.51	13.51
R	4.76	4.76	4.76	4.76	4.76
S	16.14	19.21	20.95	21.81	23.31
T	5.25	6.25	6.25	7.00	7.00
U	5.75	6.88	6.88	7.63	7.63
Z	14.09	16.18	16.18	17.82	17.82
K	16.65	18.15	18.15	18.94	18.94
DI	3"	3"	3"	3"	3"
DII	2"	2"	2"	2"	2"
MI	0.50	0.50	0.50	0.50	0.50
MII	1.13	1.13	1.13	1.13	1.13
L	24.77	27.85	29.59	30.57	32.07
Weight (lbs)	183.00	277.00	299.00	351.00	407.00

Flow chart

Frequency: 60Hz
Speed (synchr): 3600 rpm

H (ft)



TD 241-048

Options Equipment

- Impeller with reduced diameter.
- Motor for other voltage and/or frequency.
- Flushed shaft seal.

Material grades

- Product wetted seals of Buna (NBR), Fluoroelastomer (FPM) or FEP.
- Rotating seal ring material in Silicon Carbide.

Ordering

Please state the following when ordering:

- Pump size.
- Connections. (Tri-Clamp®)
- Impeller diameter.
- Seal and Elastomer Type
- Motor size.
- Voltage and frequency.
- Flow, pressure and temperature.
- Density and viscosity of the product.
- Options.

Note!

For further details, see also IM 70821.

PD66384US 2005-09

The information contained herein is correct at the time of issue, but may be subject to change without prior notice.

How to contact Alfa Laval

Contact details for all countries are continually updated on our website. Please visit www.alfalaval.com to access the information direct.